

## ASLH176

### 2-Wire 4-20mA / 20-4mA Current-Source Bridge Amplifier

The ASLH176 is a very flexible 2-wire current-source amplifier providing several standard modes of operation for use with high resistance transducer bridges. It has individual multi-turn potentiometers for the precise setting of Zero and Span. It has the capability of “reverse-scale” output (20-4mA) and supports a 5:1 range of transducer output signals. It is also available with **mid. zero output** (12mA for example) for compression / tension transducers. The inputs provide EMI-/RF and voltage transient suppression. Transducer wires can be easily connected to the board with soldering or using 2.54mm SIL connectors (standard).

#### Features

- Wide-range power supply 12-30V
- Current-source bridge excitation
- Size 56mm x 23mm x 11mm height
- Fast calibration procedure
- Reverse-polarity protection
- Reverse-scale output (20-4mA)
- Easy in-the-field gain adjustments



#### Applications

- Submersible Pressure Transducers
- Hydrostatic/Depth Transmitters
- Overload Protection Systems

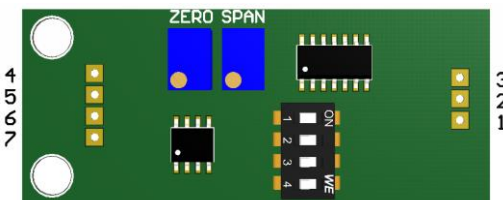
#### Ordering

**Part number: ASLH176\***

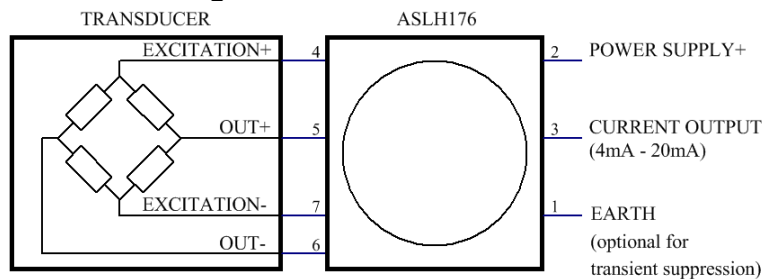
**\*Please specify whether reverse-scale output is required.**

**Customer specific electrical / mechanical changes are possible – please contact us with your individual requirements.**

#### Board Connections



#### Schematic Diagram



#### Specifications

Parameter	Min	Typical	Max	Unit
Supply Voltage	12	24	30	V
Current Output – Zero (adjustable control)		4		mA
Current Output – Span (adjustable control)		20		mA
Bridge Sensitivity	30		220	mV
Bridge Resistance			5	kOhms
Bridge Excitation Current <sup>1</sup>		1.6		mA
Current Output Temp. Coefficient – Zero		1		uV/°C
Current Output Temp. Coefficient – Span		0.01		%/°C
Operating Temperature	-20		50	°C

**<sup>1</sup>also available with 0.8mA bridge excitation current (large bridge resistance / high compliance voltage).**