

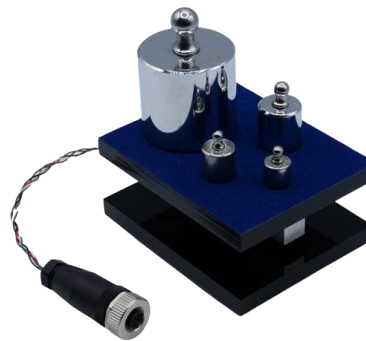


# Load-Cell Demonstration Unit Parallel-Beam Platform Structure ASLC-PB1

The ASLC-PB1 is a demonstration device featuring a strain gauge mounted on an aluminum parallel-beam platform structure, forming a typical load cell. It is compatible with any load cell amplifier or indicator, allowing the user to demonstrate the operation and application of load cells. It is available with different maximum loads. The unit is equipped with a standard industrial 4-pin connector for easy integration. It can be connected directly to our line of Load-Cell Indicators AS020 / AS021. Optional features include a set of weights with a total mass of 1 kg.

## Features

- Bridge resistance approx. 1000 Ohm
- Bridge sensitivity: 1.0 mV/V
- Maximum Loads (kg): 1, 2, 3, 5, or 10
- Size (LxBxH): 100 x 80 x 50 mm
- Direct connection to AS020 / AS021



The weights shown above are available as an optional accessory

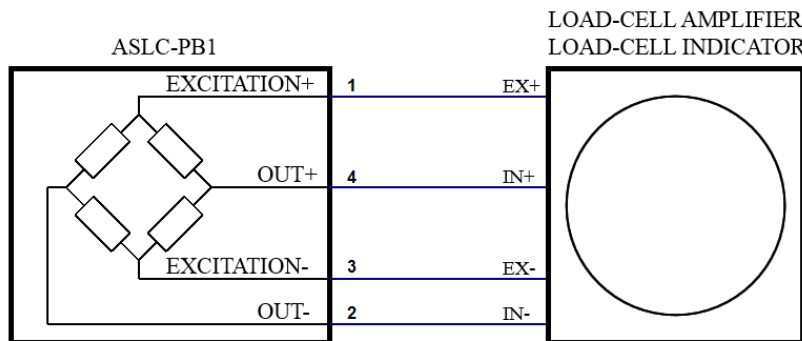
## Applications

- Educational-, Training Device
- Trade Show-, Exhibition Unit

## Ordering

<b>Part number:</b>	<b>ASLC-PB1-1KG*</b>
*1 kg maximum load. Other loads available, see below.	
Customer specific electrical / mechanical changes are possible – please contact us with your individual requirements.	

## Schematic Diagram



## Specifications


Parameter	Min	Typical	Max	Unit
Bridge Sensitivity		1.0 +/-0.15		mV/V
Bridge Resistance (Input / Output)		1000		Ohms
Bridge Excitation Voltage		5		V
Non-Linearity		0.05		%
Repeatability		0.03		%
Safety Overload Capacity		120		% FS
Ultimate Overload Range		150		% FS
Maximum Load		1, 2, 3, 5, 10		kg



### 1. Installation

The unit is provided with a M12 4-pin female connector (Binder, part no. 99 0430 14 04). The electrical connections are shown below. It can be connected directly to our Load-Cell Indicators AS020 and AS021. If connecting to a load-cell amplifier simply unscrew the strain-gauge wires from the connector.

Pin	Wire Colour	Strain-Gauge Signal
1	Red	Excitation Voltage +
2	White	Sensor Output -
3	Black	Excitation Voltage -
4	Green	Sensor Output +



### 2. Calibration

ZERO: remove any weights from the platform and perform the zero load calibration procedure as explained in the load-cell amplifier- / indicator manufacturer instructions.

SPAN: place the maximum weight on the platform and perform the span/max. load calibration procedure as explained in the load-cell amplifier- / indicator manufacturer instructions.

### 3. Standard Parts

Order Code	Description
ASLC-PB-1KG	Parallel-beam load-cell, maximum 1 kg load
ASLC-PB-2KG	Parallel-beam load-cell, maximum 2 kg load
ASLC-PB-3KG	Parallel-beam load-cell, maximum 3 kg load
ASLC-PB-5KG	Parallel-beam load-cell, maximum 5 kg load
ASLC-PB-10KG	Parallel-beam load-cell, maximum 10 kg load

### 4. Optional Accessories

Order Code	Description
ASLC-1KG-WEIGHTS	Calibration weights incl. carrying case; total 1 kg 1x 10g, 2x 20g, 1x 50g, 2x 100g, 1x 200g, 1x 500g

